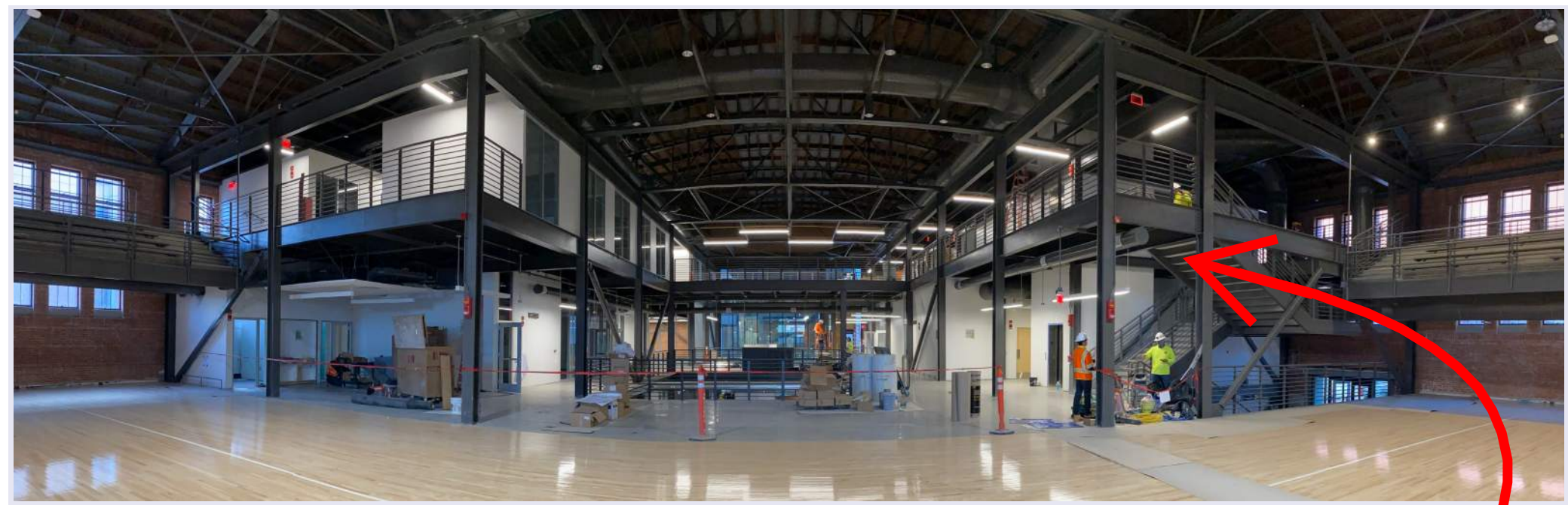
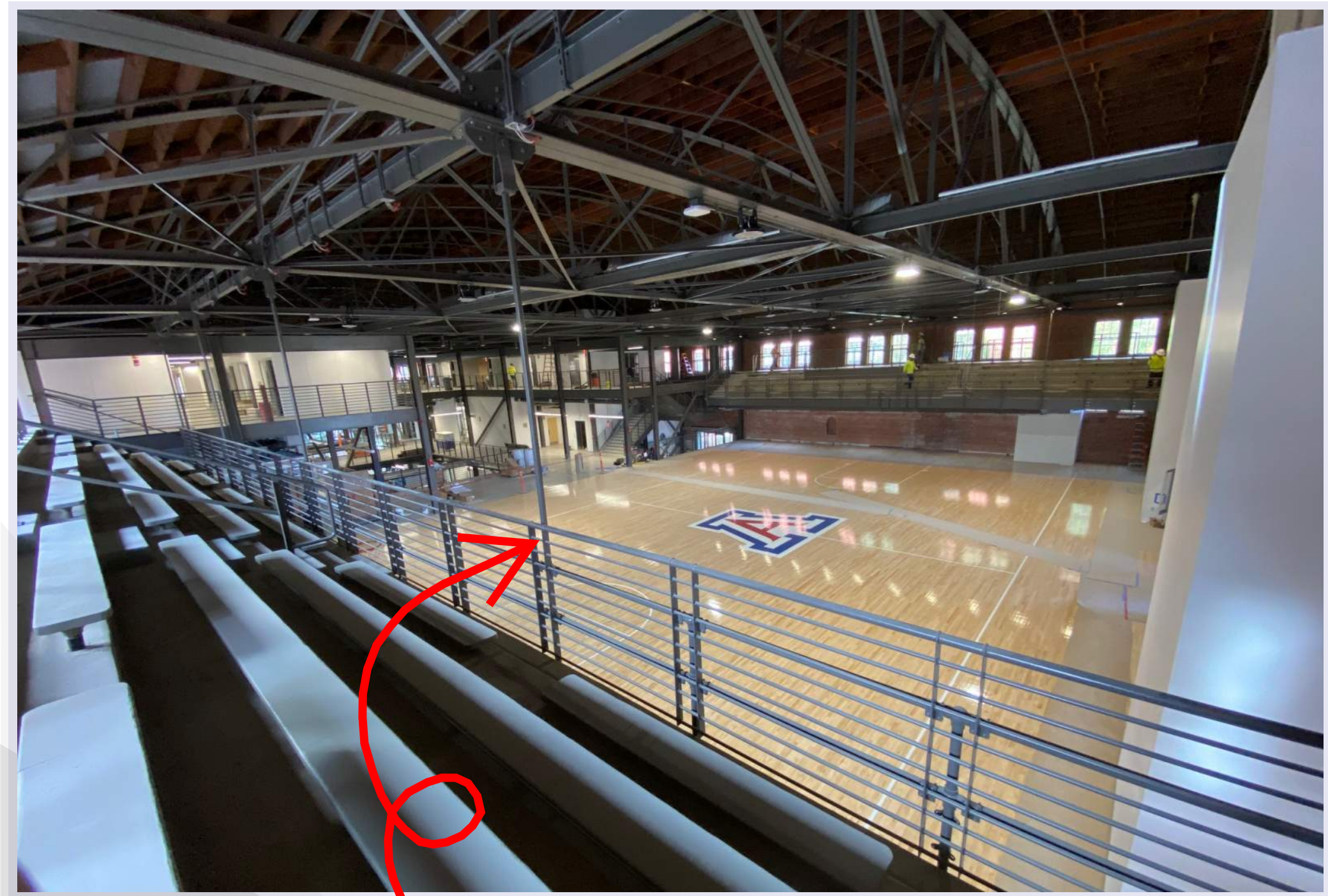


Student Success District Bear Down Gym Preservation & Renovation

Construction Update - Week of November 8th, 2021



Inside the main entrance standing on the historic gym floor, looking south. Level 3 credenzas are being installed. Kitchen appliances are being installed on level 2 and flooring is being installed in the level 1 Wellness Studio.

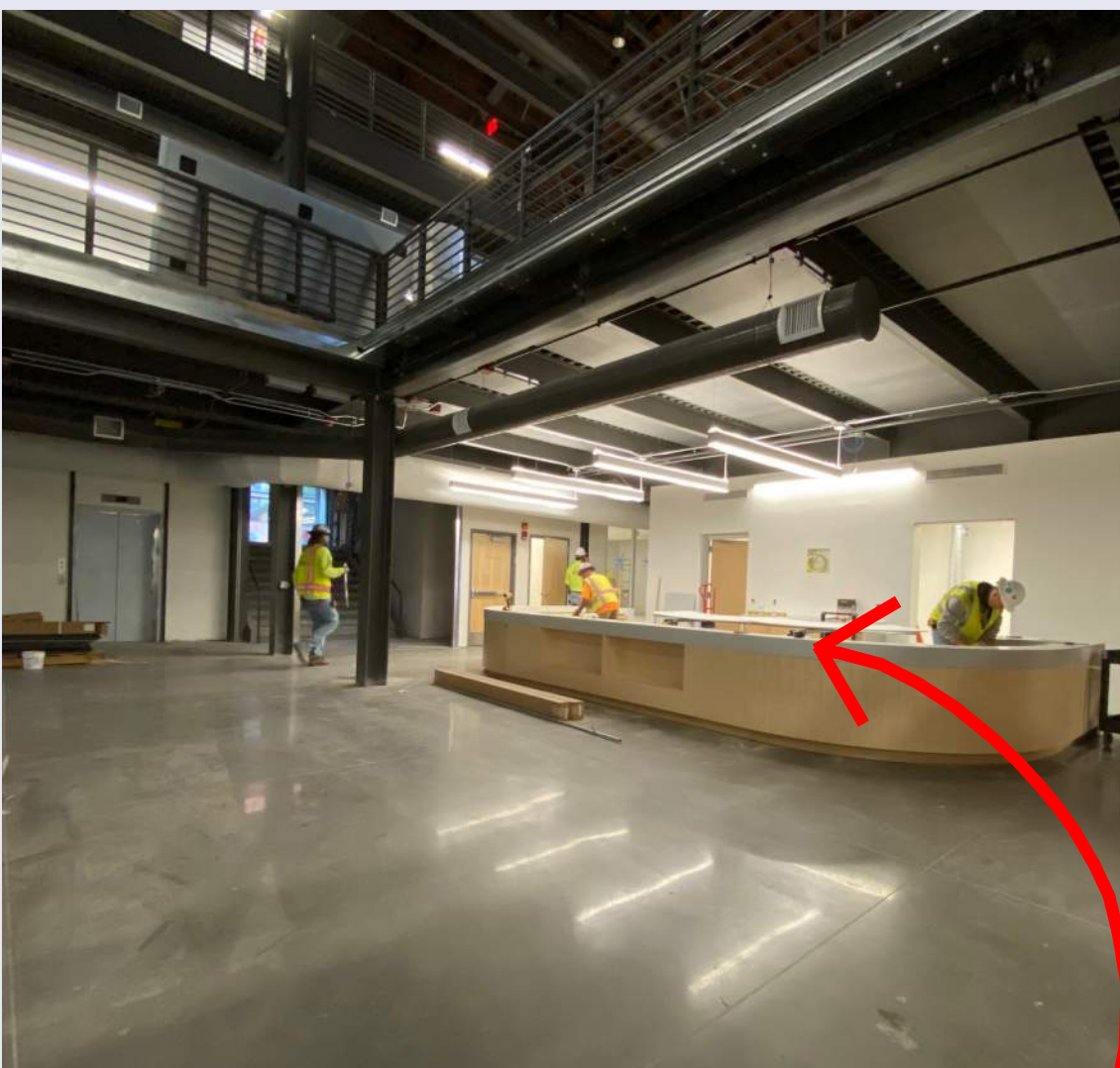


The refurbishing of the historic gym floor has been completed! The bleachers also received a coat of paint to match the color of the guardrails. Check out the timeless look of the gym neighbored by the new open design beyond!



Student Success District Bear Down Gym Preservation & Renovation

Construction Update - Week of November 8th, 2021



On the left, the base of the fountain has been installed in the healing garden. On the right, you can see the progress of the level 1 reception desk. Check it out!

The exterior landscape concrete was placed under the west canopy. This weaving pathway will parallel an adjacent arroyo alongside the Bear Down Gym.

