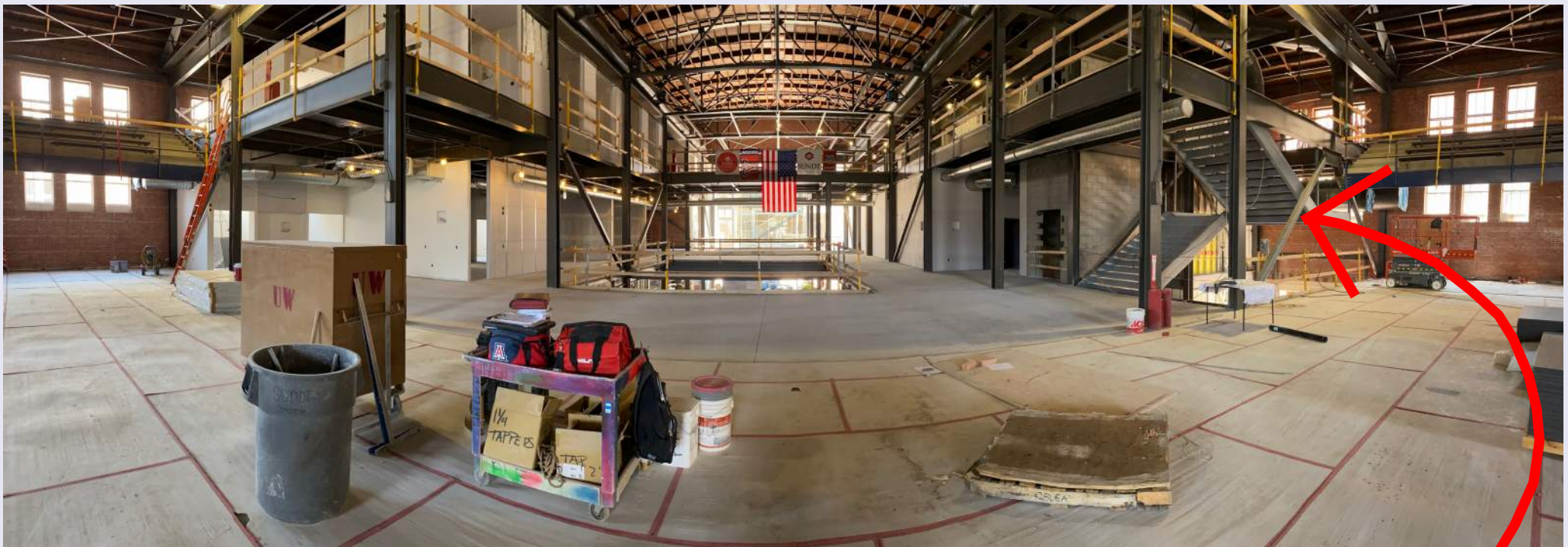
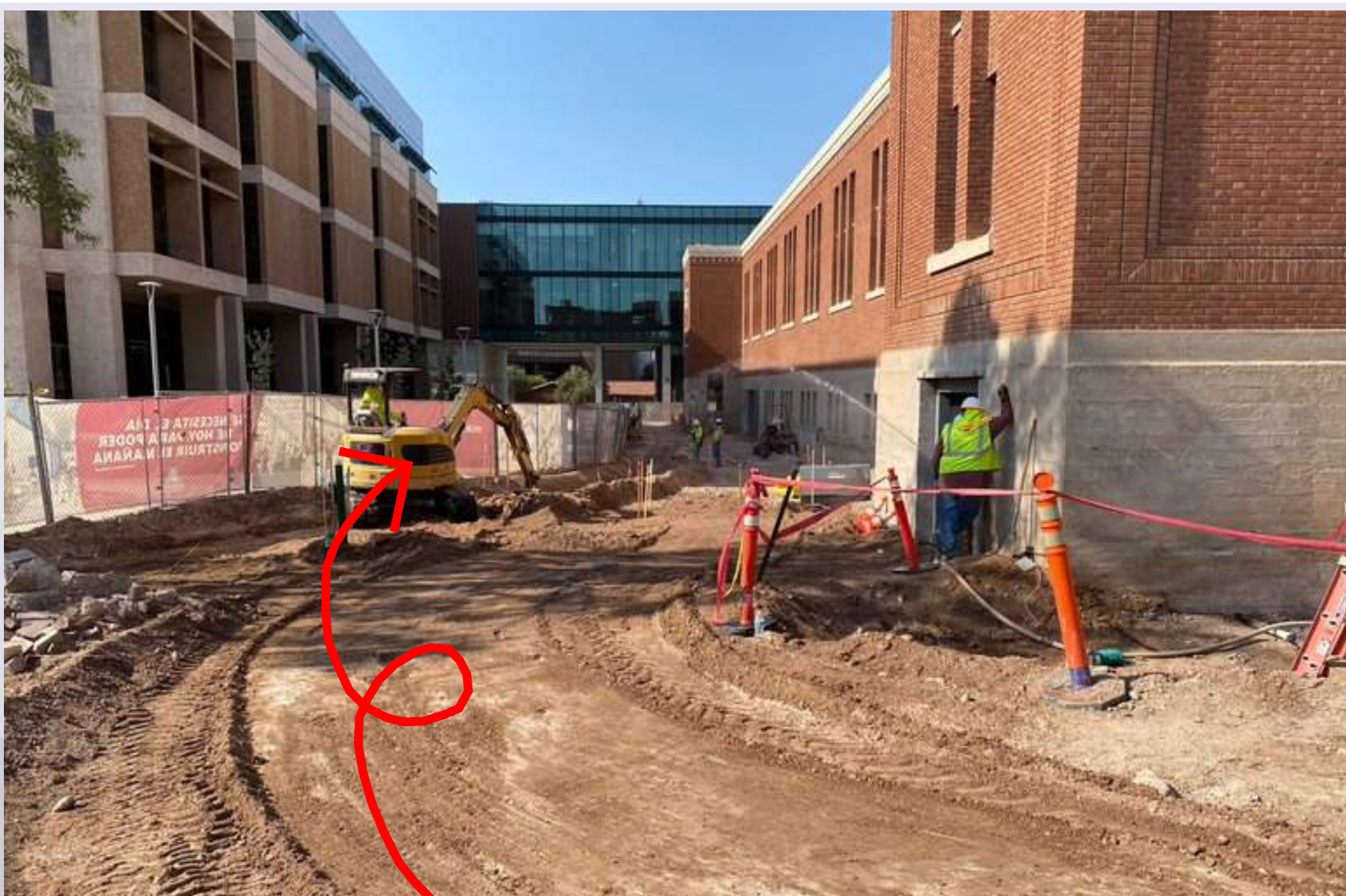


Student Success District Bear Down Gym Preservation & Renovation

Construction Update - Week of June 21, 2021



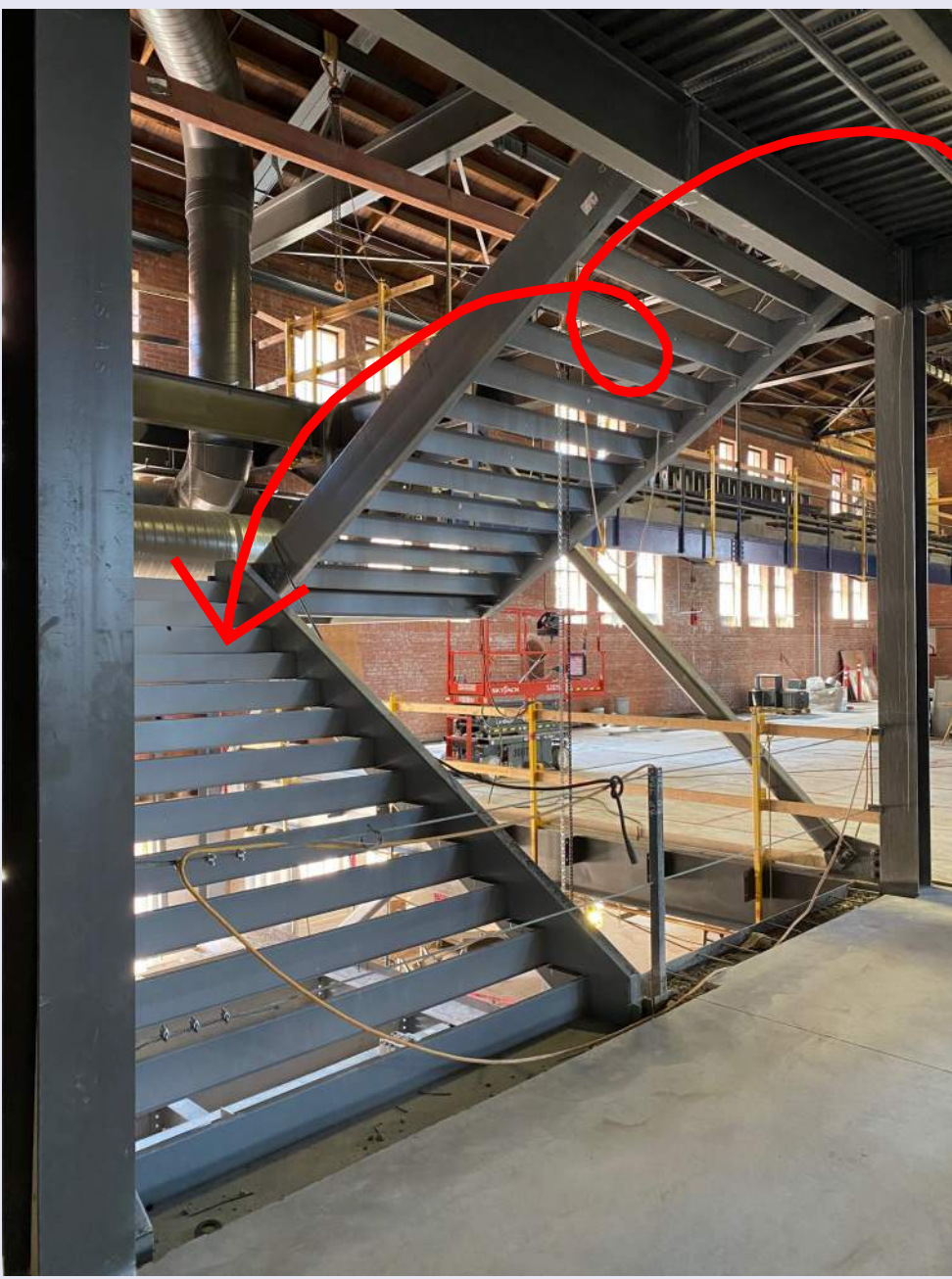
Inside the main entrance standing on the historic gym floor, looking south. Level 3 drywall is finishing up, level 2 concrete floors are being polished, and the level 1-3 steel stair is going in.



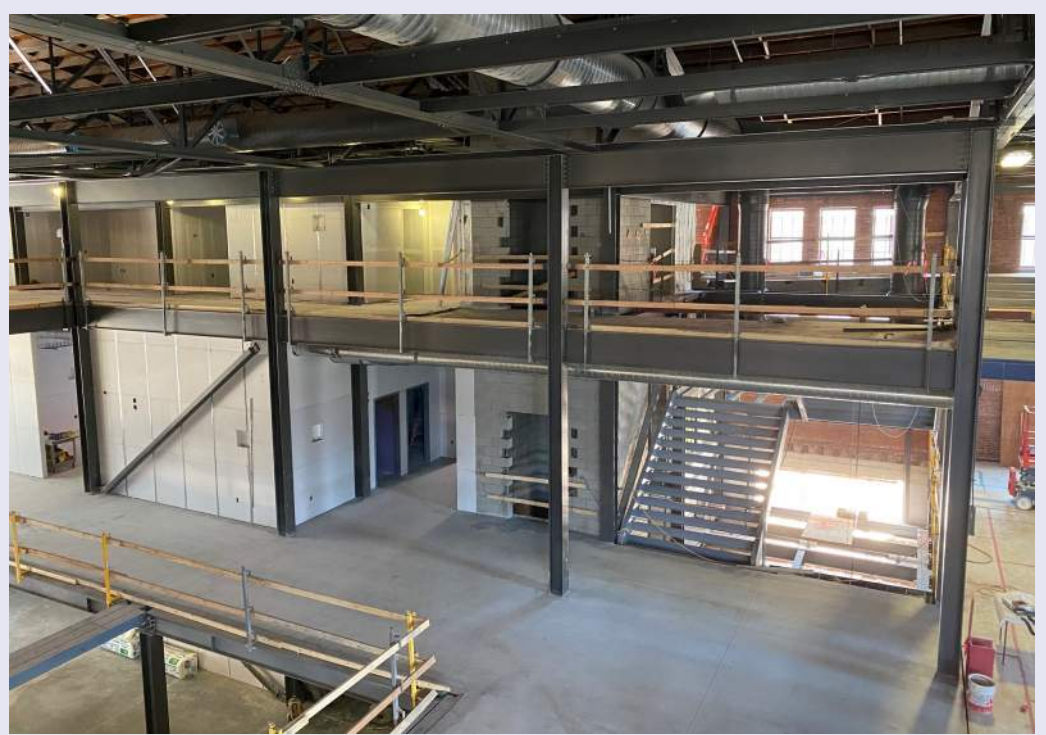
The site work has begun between the Main Library and the Bear Down Gym. The new Bartlett Academic Success Center is visible beyond.

Student Success District Bear Down Gym Preservation & Renovation

Construction Update - Week of June 21, 2021



The main stairs have been going in over the past week. These will provide access to levels; 1, 1.5, 2, and 3. At the ground level they will sit next to the entrance/exit that will lead to the Albert B. Weaver Science-Engineering Library.



Running along the underside of the historic bleachers, new sound attenuation panels are being installed.

