

Student Success District Bear Down Gym Preservation & Renovation

Construction Update - Week of May 24, 2021



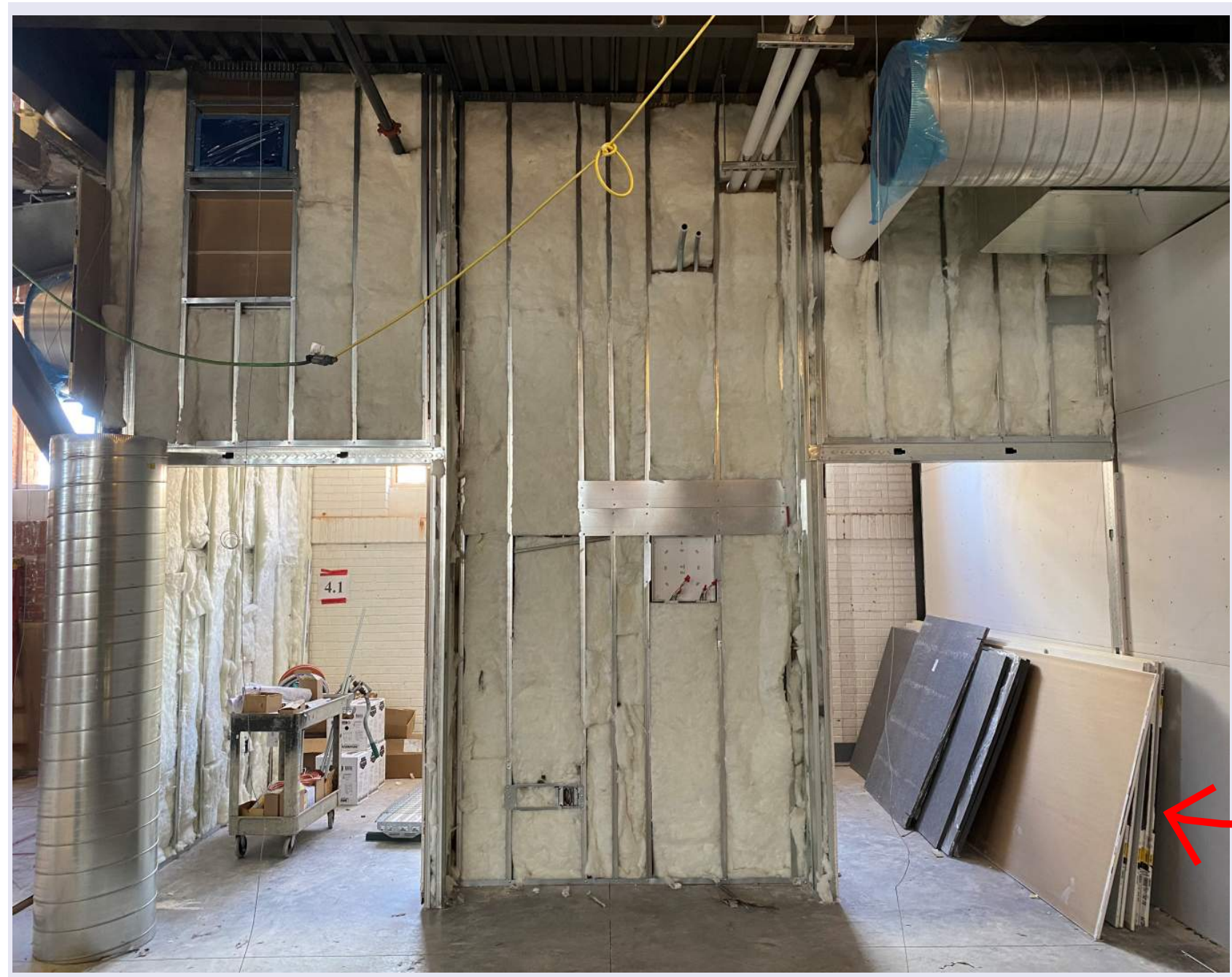
Inside the main entrance standing on the historic gym floor, looking south. Level 2 drywall is going in on top of insulation and in-wall mechanical, electrical, and plumbing systems.



View of the Main Entrance on the north side of the building during one of the last major concrete placements. The concrete slab that was placed here will be the floor of a new catering kitchen tucked into the northeast corner of the building.

Student Success District Bear Down Gym Preservation & Renovation

Construction Update - Week of May 24, 2021



This is a wall on the east side of level 2. All of the in-wall mechanical, electrical, and plumbing systems are nested within the steel framing before they are one-sided with drywall and insulation. Next the wall will be covered with a sheet of drywall before the tape, texture and paint.

The masons have returned to the Bear Down Gym with lots of scaffolding. They are infilling the the top of the opening with the same historic brick that was removed from the same spot months ago.

